

Un*ique*™ Pattern Collection

Back to Basics

4014U0 \$19.95

Body Code: ▲▼X●◆■

Fit: semi-fitted

Ease at Bust: 4.00 in. (10.25 cm)

Ease at Hip: 4.00 in. (10.25 cm)

Neck: V-neck

Sleeves: short set-in sleeves

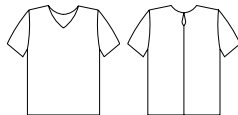
Closure: button loop back closure

Finished Length: 9" (22.75 cm) below waist

Interfacing: 5/8 yd. (0.6 m)

Notions: 1/2" (1.25 cm) shoulder pads, one 3/8" (10 mm) button

Suggested Fabrics: challis, faille, silk-like crepe



9028U0 \$20.95

Body Code: ▲▼X●◆■

Fit: semi-fitted

Ease at Bust: 4.00 in. (10.25 cm)

Ease at Hip: 4.00 in. (10.25 cm)

Neck: round neck

Sleeves: short set-in sleeves

Bodice Style: bust darts, front and back contour darts

Closure: center back zipper

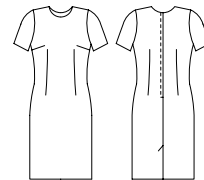
Other Features: back vent

Finished Length: at knee

Interfacing: 1/2 yd. (0.5 m)

Notions: 1/2" (1.25 cm) shoulder pads, 22" (55 cm) zipper, hook and eye closure

Suggested Fabrics: challis, crepe de chine, linen, lt. wt. cotton, lt. wt. wool, wool crepe



5018U0 \$19.95

Body Code: ▲▼X●◆■

Fit: semi-fitted

Ease at Hip: 4.50 in. (11.50 cm)

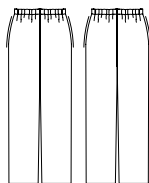
Waist: elastic waist

Pocket Style: side pockets

Pant Leg: straight leg

Notions: 1" (25 mm) wide elastic equal to waist measurement

Suggested Fabrics: double knit, interlock, jersey, lt. wt. crepe, rayon



4006U0 \$18.95

Body Code: ▲▼X●◆■

Fit: semi-fitted

Ease at Bust: 5.00 in. (12.75 cm)

Ease at Hip: 4.00 in. (10.25 cm)

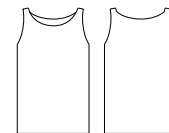
Neck: faced neck and armholes, scoop neck

Sleeves: sleeveless

Finished Length: 7" (17.75 cm) below waist

Interfacing: 1/2 yd. (0.5 m)

Suggested Fabrics: crepe de chine, faille, lt. wt. cotton



8003U0 \$21.95

Body Code: ▲▼X●◆■

Fit: semi-fitted

Ease at Bust: 5.00 in. (12.75 cm)

Ease at Hip: 4.00 in. (10.25 cm)

Lining: fully lined

Neck: softly tapered V-neck

Sleeves: long set-in sleeves

Bodice Style: back contour darts

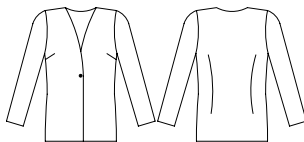
Closure: button front

Finished Length: 11" (28 cm) below waist

Interfacing: 2 1/4 yd. (2.1 m)

Notions: 3/4" (2 cm) shoulder pads, two 1" (25 mm) buttons

Suggested Fabrics: linen, med. wt. silk, wool, wool blend



4017U0

5018U0



To view more patterns or to place an order visit www.uniquepatterns.com or call Client Services at 1-800-543-4739.

Unique Traditions

4024UO \$21.95

Body Code: ▲▼ X ● ◆ ■

Fit: semi-fitted

Ease at Bust: 4.00 in. (10.25 cm)

Ease at Hip: 4.00 in. (10.25 cm)

Collar: notched collar

Sleeves: long set-in sleeves with pleated cuffs

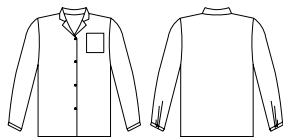
Closure: button front

Finished Length: 9" (22.75 cm) below waist

Interfacing: 1 1/3 yd. (1.2 m)

Notions: 1/2" (1.25 cm) shoulder pads, eight 5/8" (16 mm) buttons

Suggested Fabrics: challis, cotton, cotton blend, crepe de chine, lt. wt. linen



6014UO \$17.95

Body Code: ▲▼ X ● ◆ ■

Fit: fitted

Ease at Waist: 0.50 in. (1.25 cm)

Ease at Hip: 2.50 in. (6.25 cm)

Skirt Style: center back vent

Darts / Pleats: four front darts, four back darts

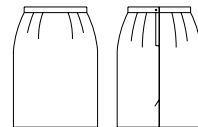
Closure: center back zipper

Finished Length: 1" (2.5 cm) above knee

Interfacing: length of waist measurement plus 2" (5 cm)

Notions: 7" (18 cm) zipper, one 5/8" (16 mm) button or hook and eye closure

Suggested Fabrics: cotton, gabardine, linen, silk, tweed, wool, wool blend



8033UO \$24.95

Body Code: ▲▼ X ● ◆ ■

Fit: semi-fitted

Ease at Bust: 4.00 in. (10.25 cm)

Ease at Hip: 4.00 in. (10.25 cm)

Lining: fully lined

Collar: notched collar

Sleeves: long two-piece set-in sleeves with vents

Bodice Style: underarm princess panels

Closure: button front

Pocket Style: welt pockets

Finished Length: 11" (28 cm) below waist

Interfacing: 2 yd. (1.9 m)

Notions: 3/4" (2 cm) shoulder pads, six 3/8" (10 mm) buttons, three 1" (25 mm) buttons

Suggested Fabrics: linen, med. wt. silk, wool, wool blend



9020UO \$20.95

Body Code: ▲▼ X ● ◆ ■

Fit: semi-fitted

Ease at Bust: 4.50 in. (11.50 cm)

Ease at Hip: 4.00 in. (10.25 cm)

Neck: scoop neck

Sleeves: short set-in sleeves

Skirt Style: front and back open-ended pleats

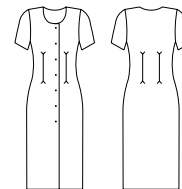
Closure: button front

Finished Length: mid-calf

Interfacing: 1 1/2 yd. (1.4 m)

Notions: 1/2" (1.25 cm) shoulder pads, seven 5/8" (16 mm) buttons

Suggested Fabrics: challis, crepe, faille, rayon, silk, wool



5029UO \$20.95

Body Code: ▲▼ X ● ◆ ■

Fit: semi-fitted

Ease at Waist: 0.50 in. (1.25 cm)

Ease at Hip: 4.50 in. (11.50 cm)

Darts / Pleats: four front pleats, four back darts

Closure: fly-front zipper

Pocket Style: trouser pocket

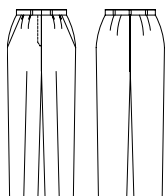
Other Features: belt loops

Pant Leg: straight leg

Interfacing: length of waist measurement plus 2" (5 cm)

Notions: 7" (18 cm) zipper, one 5/8" (16 mm) button or hook and eye closure

Suggested Fabrics: cotton blend, gabardine, linen, suiting, twill, wool, wool blend



4024UO

The Lighter Side

2020U0 \$16.95

Body Code: ▲▼×●◆■

Fit: fitted

Ease at Hip: 3.00 in. (7.75 cm)

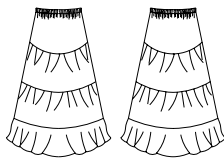
Waist: elastic waist

Skirt Style: three tiers

Finished Length: at ankle

Notions: 1" (25 mm) or 2 1/2" (65 mm) wide elastic equal to waist measurement

Suggested Fabrics: challis, chiffon, crepe, double georgette, faille, jacquard, lt. wt. linen



6026U0 \$16.95

Body Code: ▲▼×◆■

Fit: semi-fitted

Ease at Hip: 3.50 in. (9.00 cm)

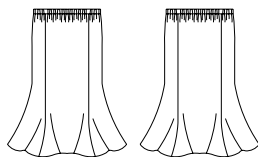
Waist: elastic waist

Skirt Style: six gores

Finished Length: mid-calf

Notions: 1" (25 mm) wide elastic equal to waist measurement

Suggested Fabrics: crepe, faille, lt. wt. cotton, rayon, silk-like crepe



4039U0 \$21.95

Body Code: ▲▼×●◆■

Fit: loose fitting

Ease at Bust: 6.00 in. (15.25 cm)

Ease at Hip: 6.00 in. (15.25 cm)

Collar: polo shirt collar

Sleeves: short sleeves

Bodice Style: dropped shoulders

Closure: button front

placket

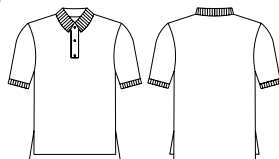
Other Features: 2" (5 cm) side seam slits

Finished Length: 10" (25.5 cm) below waist at front

Interfacing: 3/4 yd. (0.7 m)

Notions: three 3/4" (19 mm) buttons, optional purchased knit collar

Suggested Fabrics: double knit, interlock, sweater knit



5019U0 \$21.95

Body Code: ▲×■

Fit: semi-fitted

Ease at Waist: 0.50 in. (1.25 cm)

Ease at Hip: 4.00 in. (10.25 cm)

Darts / Pleats: four deep pleats in front, four back darts

Closure: fly-front zipper

Pocket Style: trouser pocket

Other Features: belt loops

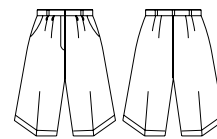
Pant Leg: 1 1/4" (3.25 cm) cuffs

Finished Length: 1" (2.5 cm) above knee

Interfacing: length of waist measurement plus 2" (5 cm)

Notions: 7" (18 cm) zipper, one 5/8" (16 mm) button or hook and eye closure

Suggested Fabrics: linen, lt. wt. gabardine, med. wt. cotton, poplin



4047U0 \$18.95

Body Code: ▲▼×●◆■

Fit: semi-fitted

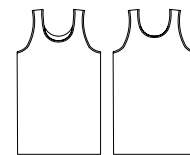
Ease at Bust: 4.00 in. (10.25 cm)

Ease at Hip: 4.00 in. (10.25 cm)

Neck: neck and armhole edges finished with bias-cut self-binding

Finished Length: 7" (17.75 cm) below waist

Suggested Fabrics: challis, cotton, crepe de chine, rayon



Give the gift of fit! with a Unique Gift Certificate!

Call 1-800-543-4739 to order yours today!



2014U0

2020U0

Forget Me Nots

2012U0 \$22.95

Body Code: ▲▼ X ● ◆ ■

Fit: semi-fitted

Ease at Bust: 4.00 in. (10.25 cm)

Ease at Hip: 4.00 in. (10.25 cm)

Neck: V-neck

Sleeves: short set-in sleeves

Bodice Style: front and back princess seams

Closure: button front

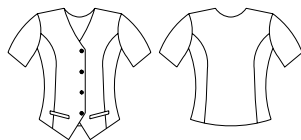
Pocket Style: two welt pockets

Finished Length: 5" (12.75 cm) below waist at side seam

Interfacing: 1 1/2 yd. (1.4 m)

Notions: 1/2" (1.25 cm) shoulder pads, four 3/4" (19 mm) buttons

Suggested Fabrics: challis, rayon, rayon-acetate blend



5021U0 \$20.95

Body Code: ▲▼ X ● ◆ ■

Fit: fitted

Ease at Waist: 0.50 in. (1.25 cm)

Ease at Hip: 2.50 in. (6.25 cm)

Darts / Pleats: four front and back darts

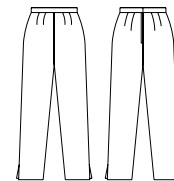
Closure: center back zipper

Pant Leg: narrow leg with 1 1/2" (3.75 cm) slit on outer leg

Interfacing: length of waist measurement plus 2" (5 cm)

Notions: 7" (18 cm) zipper, one 5/8" (16 mm) button or hook and eye closure

Suggested Fabrics: gabardine, hvy. wt. Lycra®, stretch denim, stretch twill



7020U0 \$19.95

Body Code: ▲▼ X ● ◆ ■

Fit: semi-fitted

Ease at Bust: 4.00 in. (10.25 cm)

Ease at Hip: 3.00 in. (7.75 cm)

Lining: fully lined

Neck: V-neck

Bodice Style: front and back princess seams

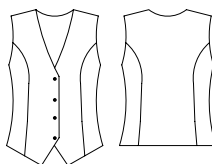
Closure: button front

Finished Length: 4 1/2" (11.5 cm) below waist at side seam

Interfacing: 1/2 yd. (0.5 m)

Notions: four 3/4" (19 mm) buttons

Suggested Fabrics: brocade, corduroy, denim, tapestry, wool



6023U0 \$17.95

Body code: ▲▼ X ● ◆ ■

Fit: semi-fitted

Ease at Waist: 0.50 in. (1.25 cm)

Ease at Hip: 3.50 in. (9.00 cm)

Skirt Style: slight A-line

Darts / Pleats: two front darts, two back darts

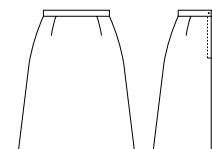
Closure: center back zipper

Finished Length: 1" (2.5 cm) above knee

Interfacing: length of waist measurement plus 2" (5 cm)

Notions: 7" (18 cm) zipper, one 5/8" (16 mm) button or hook and eye closure

Suggested Fabrics: corduroy, cotton, cotton blend, linen, lt. wt. crepe, rayon, wool crepe



9024U0 \$19.95

Body Code: ▲▼ X ■

Fit: fitted

Ease at Bust: 3.00 in. (7.75 cm)

Ease at Hip: 3.00 in. (7.75 cm)

Neck: round neck

Sleeves: sleeveless

Bodice Style: bust darts, front and back contour darts

Skirt Style: back vent

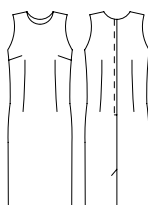
Closure: center back zipper

Finished Length: at knee

Interfacing: 1/2 yd. (0.5 m)

Notions: 22" (55 cm) zipper, hook and eye closure

Suggested Fabrics: crepe de chine, linen, lt. wt. cotton, lt. wt. gabardine, wool, wool crepe



9024U0



*Prices subject to change without notice