

# WAIT!

## Before You Cut Your Fabric, Let's Review the Garment Ease

### STEP ONE

#### Fill in Garment Ease Chart, Columns A, B, and C

In the chart below, record the measurements requested. They can be found in your pattern envelope on your measurement chart (printed with your pattern pieces) and on the pattern guide sheet.

### STEP TWO

#### Mark Pattern

Lay out the front and back pattern pieces. Make a red mark where the line for the bust, waist and hip meets the seam, 5/8" from the cut edge. (See NOTE below). Also, make a red mark on the bust, waist, and hip line at each fold line.

### STEP THREE

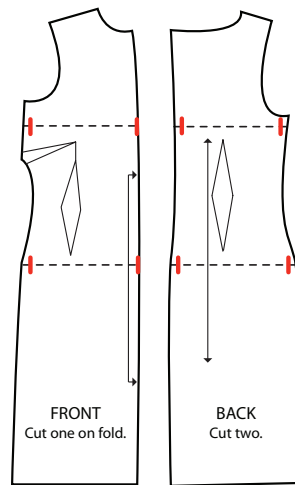
Using a dressmaker's tape, measure between the red marks on the front pattern piece. Skip over any darts. Do the same with the back pattern piece. Add front and back measurements together. Double this number (to account for left and right garments pieces) and record this measurement in Column D of the Garment Ease Chart below. Repeat for waist and hip if shown on your pattern.

### STEP FOUR

For each measurement of the bust, waist, and hips, Column C and D should be approximately the same (+/- 1/4" tolerance), verifying that the pattern was made to your measurements plus the fit ease for this particular pattern. If these numbers are not the same, please call or email for assistance.

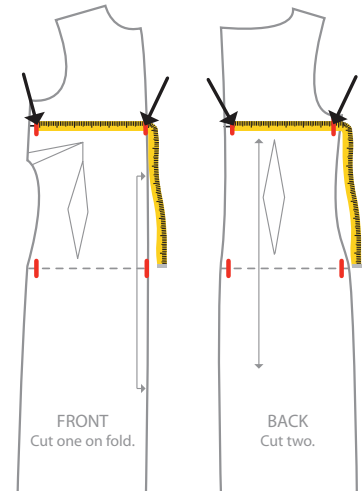
1-800-543-4739 • [fitmepatterns@uniquepatterns.com](mailto:fitmepatterns@uniquepatterns.com)

Illustration A



Make a red mark at 5/8" from cut edge, along bust and hip lines.

Illustration B



Start tape measure at red mark.

**Note:** Not all patterns have Bust, Waist, or Hip lines. For example, a dress may only have Bust and Hip lines, waist is not marked. Pants will show a waist and hip line. Dropped waist styles will not show a waist line.

## Garment Ease Chart

Pattern # \_\_\_\_\_ (Fill in your pattern number)

	A	B	C	D
	Copy your measurements from your printed pattern.	Copy pattern ease from your pattern guide sheet.	Total Add Columns A + B	Measure your pattern pieces, see instructions above.
<b>Bust Full</b>				
<b>Waist Full</b>				
<b>Fullest Hip</b>				

Note: Measurements in Column C and D should be approximately the same (+/- 1/4" tolerance).