

Lumpless Collars Part I

by Kathy Ruddy / Vice President of Member Motivation,
Unique Patterns

Perhaps you've been there before: finishing a beautiful blouse or jacket with a crisp, tailored collar the night before you plan to wear it. You still have hems to sew and buttons to add and you really don't have time to fiddle with the collar points.

You tug and pull, you drag out a knitting needle and jam that needle into the collar point, poking and prodding, all the time rolling the fabric between your fingers trying to get the fabric to lie flat. You lean with all your weight on your iron, sure that between your weight and the steam, that lump will succumb! But alas, all the elbow grease (and spit!) in the world will not prevail.

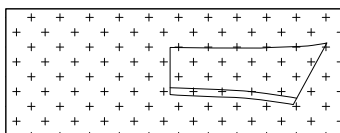
But go ahead, order 4463B0 with no worries about those collar points. Just follow Kathy Ruddy's instructions below, and you'll have a perfect collar with lumpless points!



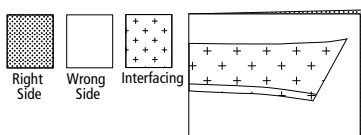
4463B0
US\$18.99
CDN\$25.69

My perfect collar consists of four layers: two fashion fabric layers and two layers of fusible interfacing. The two layers of interfacing are from different weights; one layer is a light-weight interfacing like Textured Weft (available from Unique Patterns) and the second layer is a medium-weight, crisp interfacing such as Shirt Shaper®.

Place your collar pattern piece under a rectangle of crisp fusible interfacing which is large enough for the full collar. Trace the cutting lines of the pattern onto the interfacing with a fine-tipped pencil. Trace one half of the collar and mark center back (if your pattern piece is cut on the fold, trace the entire piece). Mark the **stitching** lines with a bold line on all sides of the collar. (Hint* Use dots or dashed lines and your scissors will cut more accurately than on a solid line that wiggles.) Remove the pattern. Carefully fold the interfacing in half at center back.

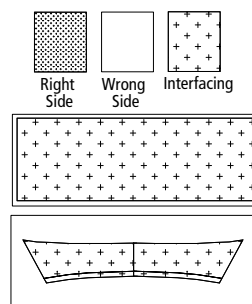
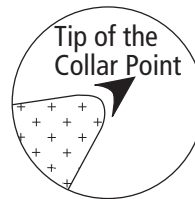


Cut out the interfacing cutting along the bold lines and along the **cutting line for the neck or band edge**. Cutting the collar out of interfacing folded in half ensures that both sides will be exactly the same. When complete, you'll have a collar interfacing



piece that includes seam allowance only at the edge that sews on the neck circle or

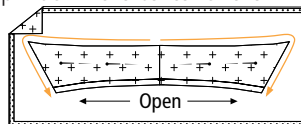
collar band. At the tip of the collar point, trim 1/16" (1.5 mm) off the interfacing, rounding the tip. This trimmed amount is often the cause of the lump that forms when the collar is turned right side out.



Next, fuse a rectangle of light-weight interfacing large enough to cover the entire collar pattern piece to the wrong side of one fashion fabric layer. Fuse the trimmed, crisp

collar interfacing piece to the wrong side of the other fashion fabric layer (large enough to cover the entire collar pattern). Be sure to keep the center back of the interfacing on the straight of the grain of the fashion fabric.

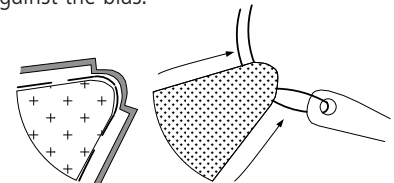
Place the fashion fabric layers with right sides together, and pin down the center of the fused collar interfacing piece, lengthwise.



Stitch next to but not through the interfacing, around the collar starting at the center back and ending at the neck edge. Leave the neck edge open. Repeat for the other half of the collar. Gently stretch the long edges as you stitch and reduce your stitch length to tiny stitches around the collar points. As you stitch around the point, drop the needle and

pivot often to keep the stitch line just outside the edge of the interfacing.

Press the seam open over a point presser. Then, trim the seam allowance to 1/8" (3 mm). Trim the seam allowance to 1/16" (1.5 mm) around collar point. Turn your collar to the right side. To sharpen the collar points, poke a threaded needle through the seam just below the point on one side and out just below the point on the other side and pull against the bias.



Now decide which side of the collar looks best. Make the best side the upper collar. Press the collar carefully over a pressing ham to roll the seams to the under-collar side. Pull the under-collar diagonally from point to neck edge to help the edges roll to the wrong side. To finish the collar, topstitch close to the edge or 1/4" (6 mm) away. Trim off the excess under collar even with upper collar at neck edge.

If you take the time to prepare your pattern pieces, you will save yourself frustration later on. And who has time to search for the proper sized knitting needle anyway?

WAIT!
The fun doesn't stop there! In our next issue, Kathy will guide you through attaching your collar to your garment. Be sure to watch for it.