

Lumpless Collars Part II

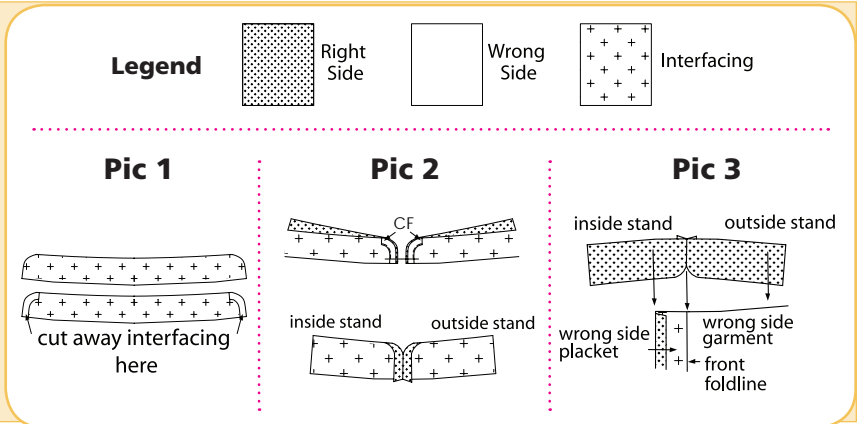
by Kathy Ruddy / Vice President of Member Motivation,
Unique Patterns

In the April issue of the *Unique Times*, I talked about lumpless points on your collar. This technique will guide you through attaching the collar to your garments.

Cut enough interfacing for both stand layers. On one interfacing piece, trim away the seam allowance from center front to front neckline edge (**Pic 1**). This will create a stitch guide line for the next step. Interface the stands following manufacturer's instructions.

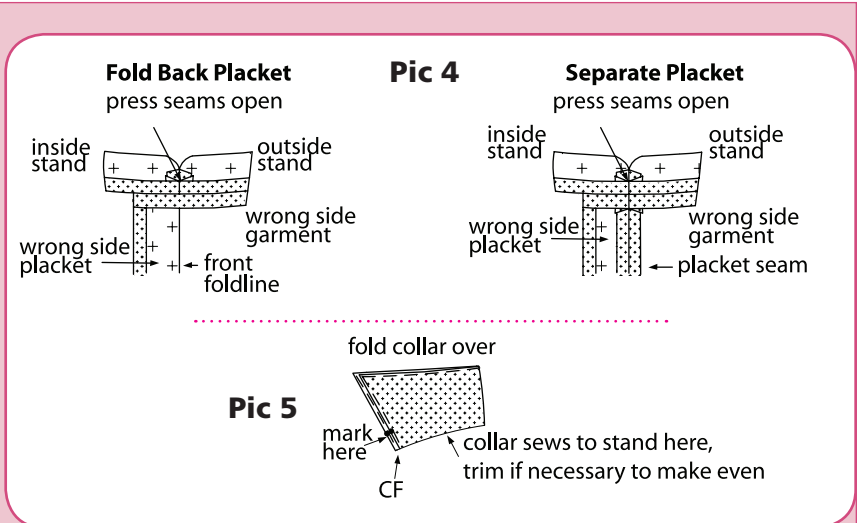
With right sides together, sew the stand from center front toward the neck edge, stopping 1/2" (1.25 cm) from bottom (neck edge.) Repeat for other side (**Pic 2 top**). Press the seam open (**Pic 2 bottom**).

With right sides together and matching the Center Fronts, pin the outside stand to the neckline (**Pic 3**).



Stitch the stand to the neckline starting at the center back, stitching toward the Center Fronts (CF), but stitching past the CF and ending where the facing or placket ends. Press the joining seams open so that equal bulk goes up onto the stand and down onto the shirt creating a smooth finish (**Pic 4 two versions shown**). Do not turn stands to inside.

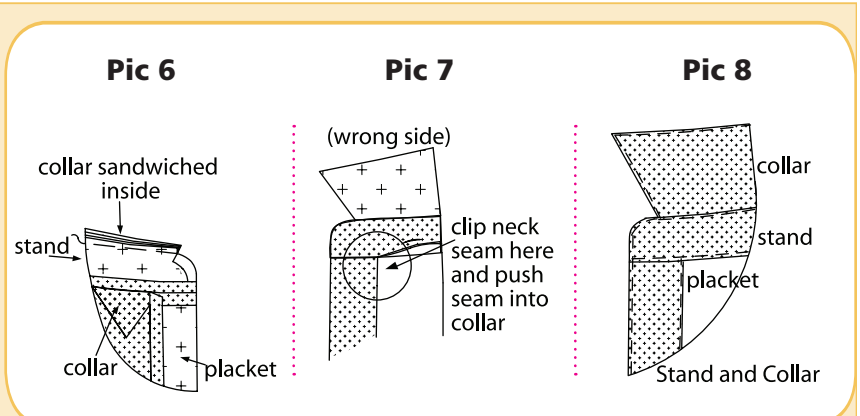
At this point you can sew your collar together, turn, press and top-stitch, if desired. (See our last newsletter for Kathy Ruddy's method of lumpless points.) Fold the finished collar in half and check to see that both sides of the neck edge seam are the same shape. If necessary, trim to make them even. Mark both sides of collar at CF, the point where the collar stitches to the band, 5/8" (1.6 cm) up on the point from the neckline edge (**Pic 5**).



Sandwich the collar between the two stand layers, sliding the finished collar with the under collar side down and against the right side of the outside stand (**Pic 6**). Stitch the stand from center front to center front. Trim seam allowance to 1/8" (0.3 cm).

Turn the stands right sides out, pulling out the collar. Press both the upper and under sides of the collar and stand to smooth the seam line. Clip neck seam allowance at the placket extension or facing and turn up the neck seam allowances into stand piece (**Pic 7**). (The neck seam allowances inside the placket or facing are turned down from the previous step.)

Now, only the inside stand will have an open neck seam. Finish the inside stand by folding the seam allowance under, keeping it even with the neck edge stitch line and press. Trim the pressed seam allowance



to 3/8" (0.9 cm). Pin the inside collar stand to the seam line and top stitch next to seam line around all edges of stand as well as all edges of the placket (**Pic 8**). **With perfect points and a smooth stand, your blouse or shirt collar will look as well-turned out as you!**